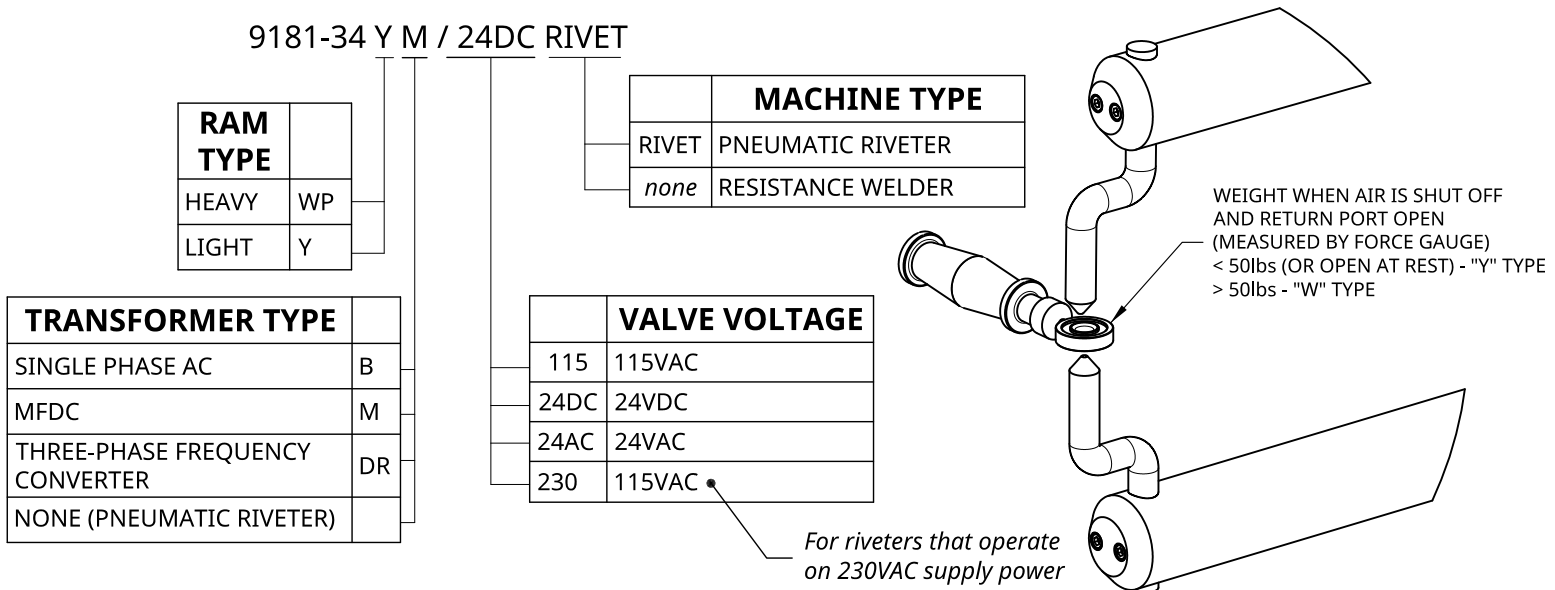


9181-34 SERIES STANDALONE SOFT TOUCH Pinch Point Safety System

Mechanical Datasheet

1. Applicable System Configurations

a) Configurations described in this datasheet



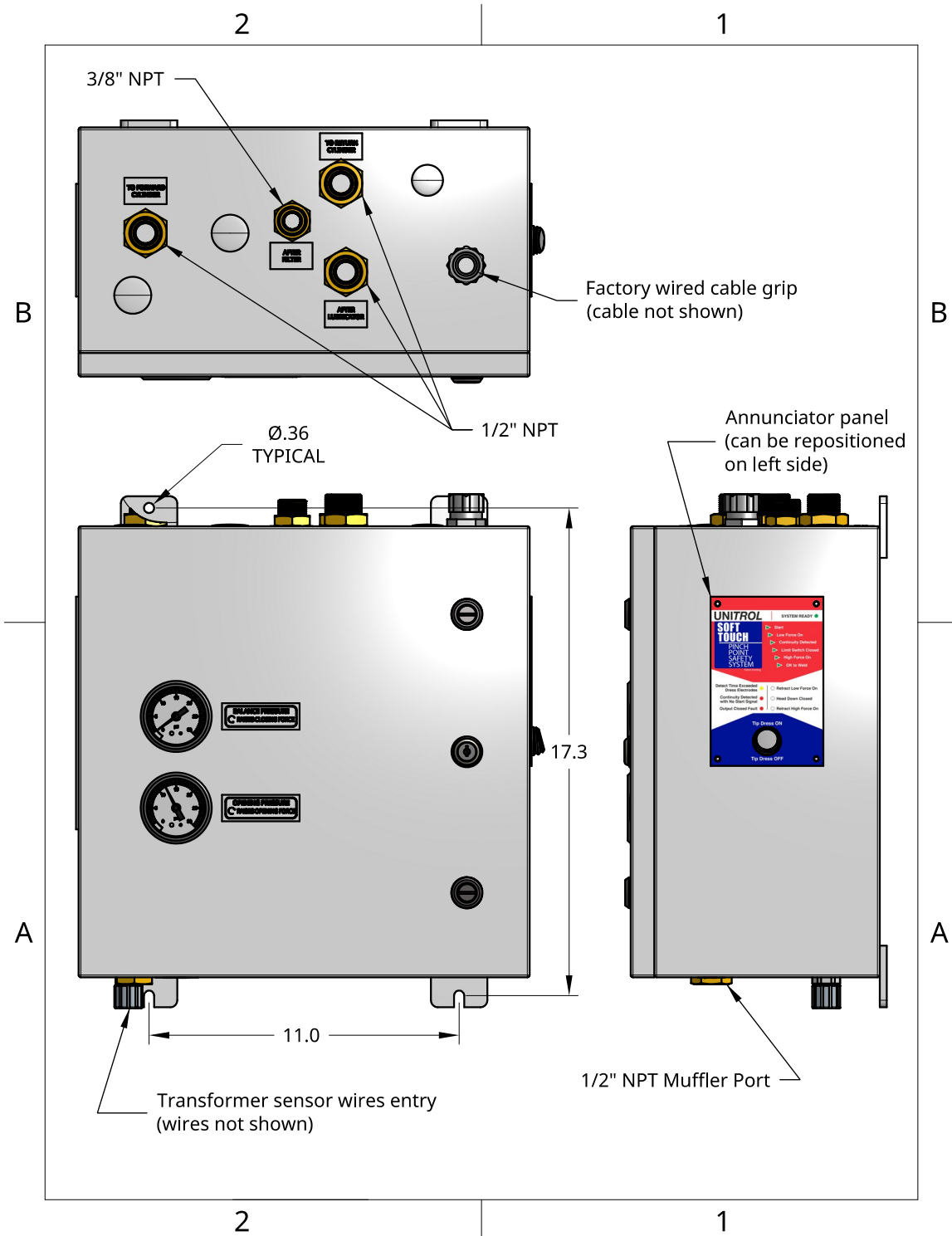
b) Mechanical frame code lookup table

Ram Type	System contains option 9181-34J... <i>Retract stroke protection</i>	Frame Code
HEAVY (W)		A
HEAVY (W)	X	B
LIGHT (Y)		E
LIGHT (Y)	X	F

**Information for configurations not listed available upon request.
Contact info@unitrol-electronics.com or call +1 (847) 480-0115.**

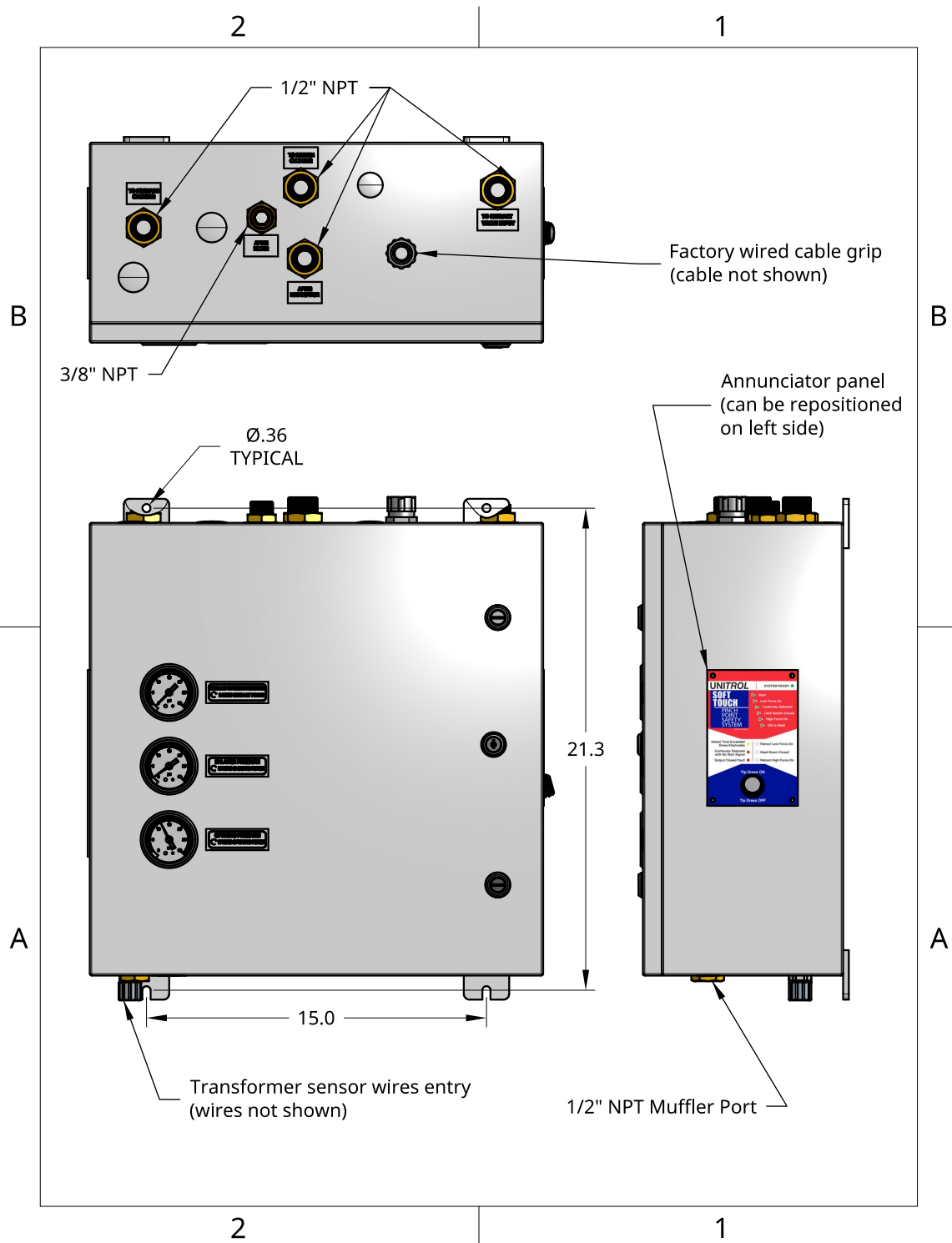
2. A Frame Dimensional Drawing

9181-34WPB/115
 9181-34WPB/24DC
 9181-34WPB/24AC
 9181-34WPM/115
 9181-34WPM/24DC
 9181-34WPM/24AC



[CAD download: A1P4.step \(STEP AP242\)](#)

3. B Frame Dimensional Drawing



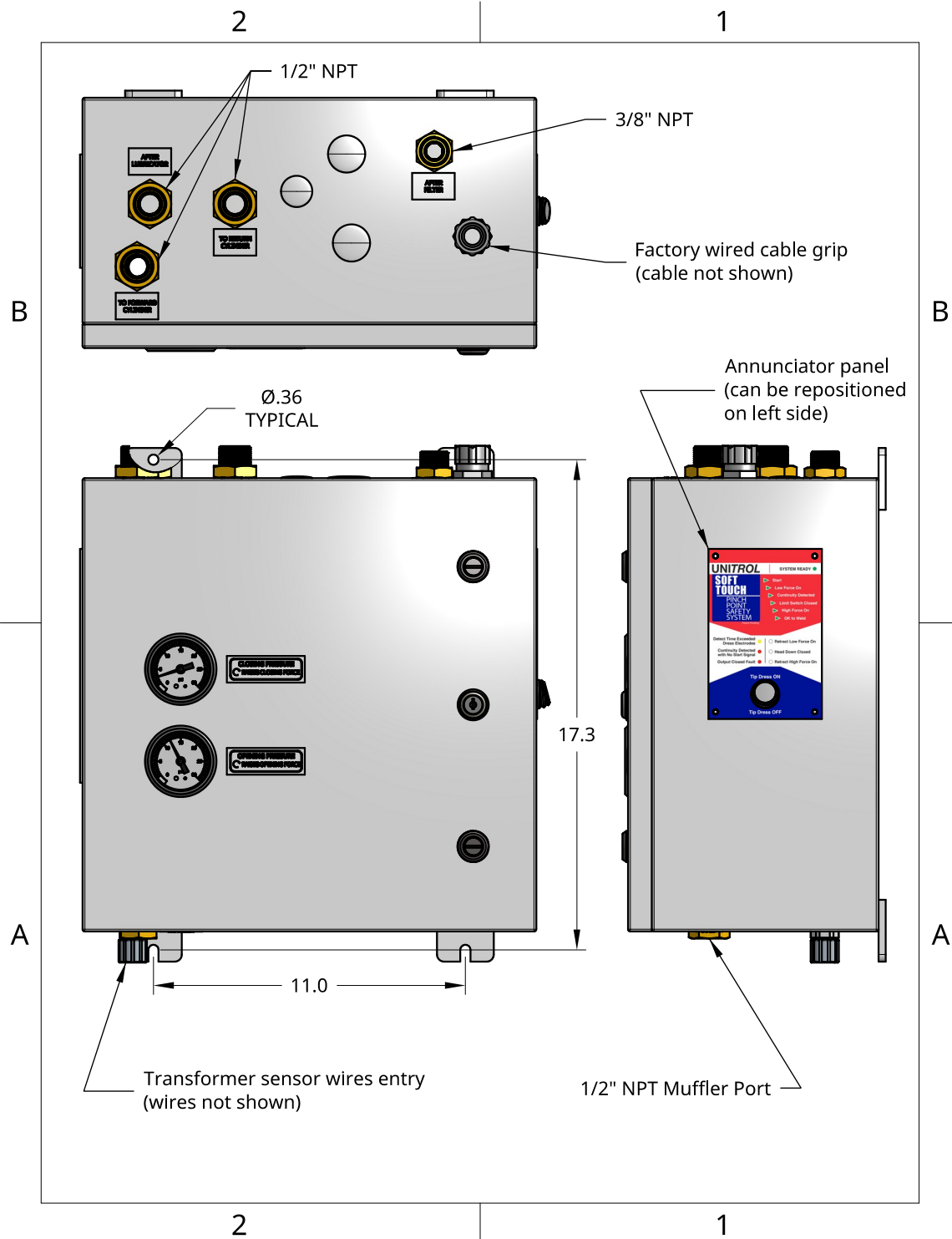
9181-34WPB/115
 9181-34WPB/24DC
 9181-34WPB/24AC
 9181-34WPM/115
 9181-34WPM/24DC
 9181-34WPM/24AC

With either of the following options:
 9181-34JA
 9181-34JB

[CAD download: B1P4.step \(STEP AP242\)](#)

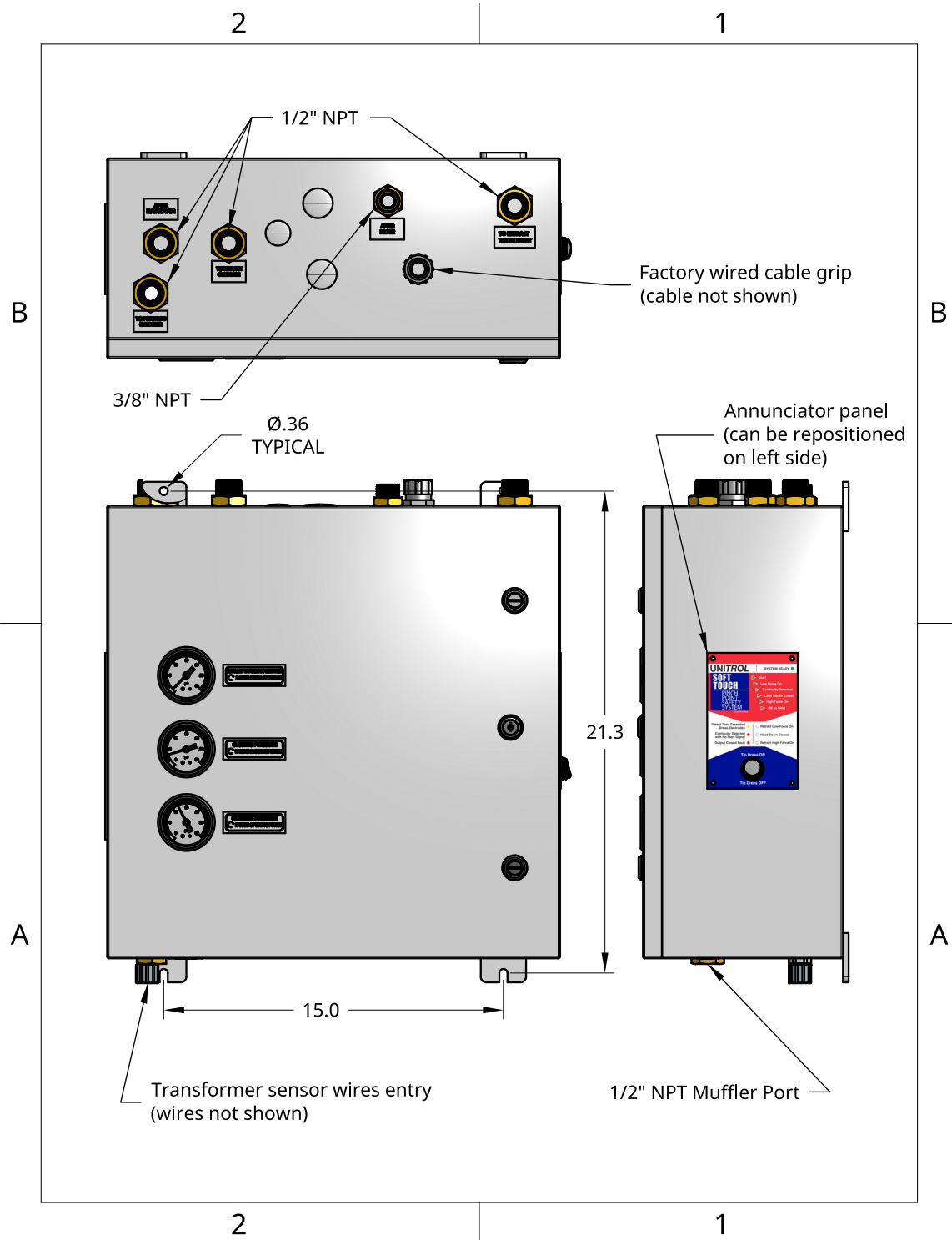
4. E Frame Dimensional Drawing

9181-34YB/115
 9181-34YB/24DC
 9181-34YB/24AC
 9181-34YM/115
 9181-34YM/24DC
 9181-34YM/24AC



[CAD download: E1P5.step \(STEP AP242\)](#)

5. F Frame Dimensional Drawing



9181-34YB/115
 9181-34YB/24DC
 9181-34YB/24AC
 9181-34YM/115
 9181-34YM/24DC
 9181-34YM/24AC

With either of the following options:
 9181-34JA
 9181-34JB

[CAD download: F1P4.step \(STEP AP242\)](#)